

PREGIO500

Multi-functional hybrid control unit for intrusion detection systems

PREGIO500 is a multi-functional hybrid control unit that supports both wired and wireless devices.

Main characteristics:

- Management of 16 sectors grouped in areas;
- Management of 8 on-board zones (16 with split function, up to 24 using concentrators), 24 outputs, 32 users, up to 16 control devices;
- Input and outputs on board: system tamper input, siren power supply/control outputs, sensors 12V power output, programmable relay output;
- Optional modules supported: MDWIFIH, MDVOICE64, MDGSMI or MDPSTN;
- Supports all EL.MO. serial devices on ULTRABUS interface;
- Compatible with NG-TRX technology using GATEWAY2K;
- Connection to e-Connect using MDGSMI or MDWIFIH modules.

This **Quick Guide** and the relevant **User Manual** are supplied with PREGIO500 control unit.

PREGIO500 technical and programming manual are available for download at www.elmospa.com (easy site registration required): the site can be accessed using the QR Code supplied in this manual.

This quick guide explains briefly how to mount and configure PREGIO500 control unit. We recommend to refer to technical and programming manuals for complete details on such operations.

Contents of this quick guide:

1. Installation

2. Putting into Service

- ↳ Use menu at keypad
- ↳ Use BrowserOne software

3. Operating Mode

- ↳ Arm/disarm the system
- ↳ Perform a system test



IMQ-SISTEMI DI SICUREZZA

DOWNLOAD TECHNICAL DOCUMENTATION

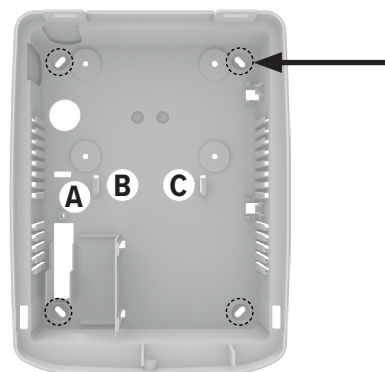


bit.ly/2PtFbBq

1. INSTALLATION

↳ for details please see: TECHNICAL MANUAL

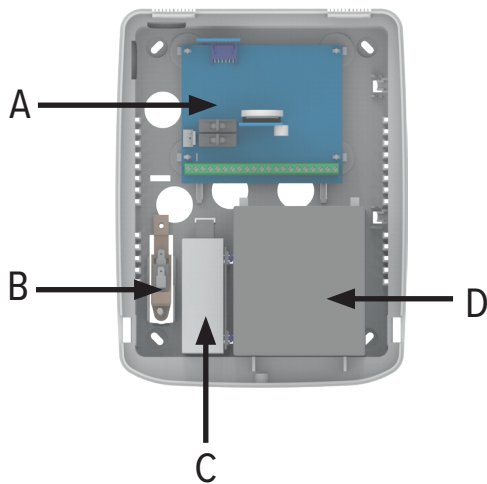
- Unscrew the screw on the bottom of the case and remove unit cover.



- Mark on the wall the fixing points of the unit base. Fix it with screws and dowels (supplied).
- Feed mains cable through **A** hole, then system cables through **B** and **C** holes. Make sure all cables are not powered.

- Connect mains cable to the corresponding terminals (neutral, phase, ground) of AL25RS15V0/1,7A power unit. Connect the cable from the power unit to the on-board J12 input. Use cable ties to keep the cable in the correct position.
- Place the battery (12V/4,2Ah) into the dedicated area. Connect black and red cables from the control unit board to the battery terminals.
- Connect tamper protection switch (against both opening of the cover and the removal from the wall) to on-board 24H terminals. If required by devices type, connect tamper contacts of devices in series to the switch.

The following image shows the position of elements:



- A. Electronic board
- B. Tamper protection switch
- C. AL25RS15V0 power supply unit
- D. Battery (12V/4,2Ah)

1.1 MODULES

- Install the necessary modules directly to the control unit board as illustrated in the technical manual.
- Afterwards, modules shall be registered with the option **MODULES REGISTR.** in installer menu.

1.2 DEVICES

- Connect at least one keypad to the control unit serial line in order to access the unit configuration menu.
- Connect proximity keys, cabled devices, cabled sirens, concentrators and GATEWAY2K as illustrated in the relevant manuals.

After the connection of all devices required:

- Power the control unit.
- Configure control unit as indicated, see “2. PUTTING INTO SERVICE” on page 2.
- Perform a system test.

- Close the unit housing.

2. PUTTING INTO SERVICE

To configure PREGIO500 unit, use installer menu from keypad and BrowserOne software: the two elements are complementary.

2.1 OPERATION FROM INSTALLER MENU

→ for details please see PROGRAMMING MANUAL



Enter the **installer menu** from keypad (available only if the installer has user authorization to access the system) with the following steps:

- Key in installer code (8 digit, default: 88888888);
- Press **OK**.
- Use arrow keys (↓ and ↑) to browse the menu options.

Press **OK** to enter a submenu, **Stop** to exit the menu.

If **Stop** key is pressed repeatedly after an operation, you may be asked whether to save changes or not.



2.1.1 Registration of installed modules

Installed modules must be registered.

- Go to **MODULES REGISTR.** menu.
- Press **OK** to enter the menu.
- Use arrow keys (↓ and ↑) to browse installed modules.
- Press **OK** to register a module. An acoustic signal will be emitted to confirm the registration.
- Press **Stop** to exit the menu.

2.1.2 Wired zones setup

For basic setup of wired zones use the keypad menu. Setup is limited to area #1. Use BrowserOne for zones complete setup.

- Go to **SYSTEM SETTINGS** menu.
- Press **OK** to enter the menu.
- Use arrow keys (↓ and ↑) to go to **ZONES** menu.

- Press **OK** to enter the menu.
- Use arrow keys (↓ and ↑) to select the zone, or digit the zone number.
- Press **OK** to enter the zone menu.
- Use arrow keys (↓ and ↑) to go to one of the following options or menu pages.

Zones connection

To activate zones go to **CONNECTION** menu:

- Press **OK** to enter the menu.
- Press **OK** repeatedly to switch connection status: YES (= connected) and NO (= disconnected).
- Press **Stop** to exit the menu.

Zones type setup

Go to **TYPE** menu:

- Press **OK** to enter the menu.
- Use arrow keys (↓ and ↑) to browse zone types.
- Press **Stop** to exit the menu.

Assign zones to sectors

Go to **SECTOR AREA1** menu:

- Press **OK** to enter the menu.
- Use number keys to select sectors to be assigned to the relevant zone. From keypad, only area #1 sectors can be modified.
- Press **Stop** to exit the menu.

In **ZONES** menu there are more options for zones setup: *EVENT, MAX ALARMS, ENTRY TIME, PRE-ALARM, EXIT PATH, WALK TEST, AUTO-BYPASS, 24H, NAME.*

2.1.3 Users configuration

For basic setup of users, use the keypad menu. Setup is limited to area #1. Use BrowserOne for zones complete setup.

- Go to **SYSTEM SETTINGS** menu.
- Press **OK** to enter the menu.
- Use arrow keys (↓ and ↑) to go to **USERS** menu.
- Press **OK** to enter the menu.
- Use arrow keys (↓ and ↑) to go to the selected zone or key in the zone number directly.
- Press **OK** to go to the zone menu.
- Use arrow keys (↓ and ↑) to go to one of the following options or menu pages.

Change user codes

Go to **CHANGE CODE** menu.

- Press **OK** to enter the menu.
- Use number keys to key in the new user code (default: 11111).
- Key in the code again. If the two codes correspond, the new code will be saved. The menu exit is automatic.

Authorize user for code use

Go to **KEYPAD CODE/SMS** menu:

- Press **OK** to enter the menu.
- Press **OK** repeatedly to switch between YES and NO. If you set NO, the user will not be able to use the code from keypad and the remote control via SMS.
- Press **Stop** to exit the menu.

Authorize user for USER MENU

Go to **MAINTENANCE** menu:

- Press **OK** to enter the menu.
- Press **OK** repeatedly to switch between YES and NO. If you set NO, the user will not be able to access user maintenance menu.
- Press **Stop** to exit the menu.

Setup of sectors authorized for users

Authorized sectors are sectors that users can arm and disarm.

Go to **AUTH.SECT.AREA1** menu:

- Press **OK** to enter the menu.
- Press a number key to add the corresponding sector to the group of authorized sectors, press it again to remove it. An authorized sectors is displayed with a number, an unauthorized sector is displayed with a hyphen “ - “. From keypad, only area #1 sectors can be modified.

```
AuthSectArea1
1 2 - 4
```

- Press **Stop** to exit the menu.

Setup of sectors proposed to users

Proposed sectors are sectors proposed for arming to the user during arming procedure.

Go to **PROP.SECT.AREA1** menu:

- Press **OK** to enter the menu.
- Press a number key to add the corresponding sector to the group of proposed sectors, press it again to remove it. A proposed sector is displayed with a number, a non-proposed sector is displayed with a hyphen “ - “. From keypad, only area #1 sectors can be modified.

```
PropSectArea1
1 2 - 4
```

- Press **Stop** to exit the menu.

2.1.4 System lock

The system can be locked in case of maintenance or installation/replacement of devices.

- Go to **SYSTEM LOCK** menu.
- Press **OK** to enter the menu.
- Press **OK** to lock the system. LED indicators of keypads and readers will blink and the following message will appear:



- Press **Stop** to exit the menu and unlock the system.

2.1.5 Devices learning

Wireless devices must be learnt using installer menu.

The procedure differs according to devices type:

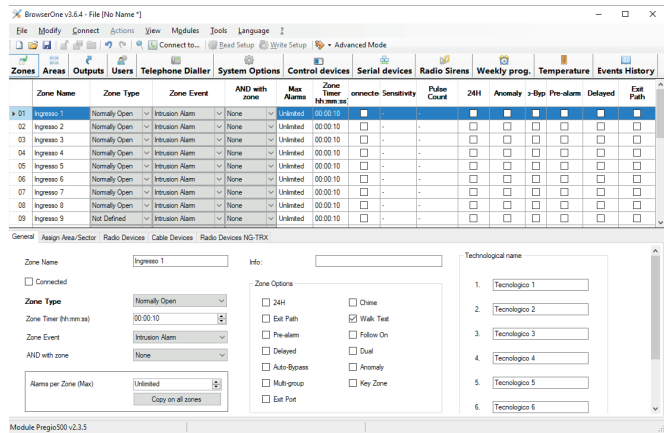
1. NG-TRX Wireless devices learning (detectors, remote controls) over GATEWAY2K:
 - Go to **FAST ACQUIRE** menu.
 - Press **OK** to enter the menu.
 - Press **Stop** repeatedly to go to the desired option (*NEW R.C.? / NEW SENSOR? / NEW SIREN?*). Please see programming manual for details.
2. Non-NG-TRX wireless devices learning (detectors, remote controls) to RIVERRF:
 - Go to **LEARN RADIO DET.** menu.
 - Press **OK** to enter the menu. Please see programming manual for details.
3. Proximity keys learning:
 - Go to **LEARN PROXY R.C.** menu.
 - Press **OK** to enter the menu. Please see programming manual for details.

2.2 OPERATIONS WITH BROWSERONE

↳ for details please see PROGRAMMING MANUAL.

BrowserOne software allows the complete configuration of the control unit.

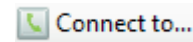
Here follows a brief overview of the basic parameters that can be configured via BrowserOne: refer to the programming manual for a complete description. The programming manual also contains the section **GUIDE TO THE FIRST CONFIGURATION** for the basic configuration of the unit.



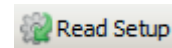
- Download installation files of BrowserOne and of the module for the control unit from **www.elmospa.com** and install them. PREGIO500 requires BrowserOne v3.6.7 or above, and Pregio500 module v2.4.3 or above.
- Click the icon to open BrowserOne.



- Connect the control unit to the PC (for example, using a mini B USB cable). Start the connection using menu **Connect > Connect to...**



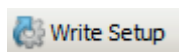
- Load control unit module using **Modules** menu.
- Learn all wireless devices as shown in devices learning, see “2.1.5 Devices learning” on page 4.
- Click on **Read Setup** to read the unit configuration.



- **Zones** page: allows to set zones properties (**Zone Type**, **Zone Event** generated by the zone, several other properties among which **Walk test**, **24H**, **Exit Path**), activate zones and assign sectors to zones in order to perform partial armings.

- **Outputs** page: allows to set outputs options, in detail, for each output it is possible to set the activation event and the relay operating mode (**Mode**).
- **Users** page: allows to set users properties (code, maintenance from keypad) and sector authorized/proposed.
- **Telephone Dialler** page: allows to set digital and voice communications, and SMS texts.
- **System Options** page: allows to set system parameters.
- **Control Devices** page: allows to set system keypads, readers, and remote controls.
- **Serial Devices** page: allows to set devices connected over serial line.
- **Radio Sirens** page: allows to set system radio sirens.
- **Weekly Prog(rammer)** page: allows to set and modify schedules to be activated at specified days and time.
- **Status** page: allows to check system status in real time.

Once setup is complete, select **Write Setup** to write the configuration to the control unit.



2.2.1 Firmware Update

To update control unit firmware use **Firmware Update Panel** menu in BrowserOne window.

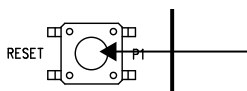
- ↳ for details please see TECHNICAL MANUAL.

2.3 CONTROL UNIT RESET

- ↳ for details please see TECHNICAL MANUAL.

This procedure resets the operating unit to default settings .

- Lock the system: see “2.1.4 System lock” on page 4.
- Open control unit case.
- Close the manual contact (SIR +RIF.) for maintenance of wired self-powered sirens.
- Press and hold RESET button.



- Press and hold keypad **OK** button with address #1.
- Release RESET button. When the message DEFAULT CONFIG? appears, release **OK** button.
- Press ↓ , then ↑.
- The message REGISTER MODULES? will appear. Press **OK** to register installed modules.

2.4 E-CONNECT CONFIGURATION

- ↳ for details please see PROGRAMMING MANUAL.



e-Connect is a supervision software for EL.MO. intrusion detection systems that allows to control and manage intrusion detection systems via Internet, from PC or via smartphone app.

The software requires the installation of MDWIFIH or MDGSMI modules onto PREGIO500 unit.

- Register to e-Connect service: you will receive a 9-digit code via e-mail.
- In BrowserOne, configure the connection via Wi-Fi (in case of MDWIFIH module) or via GSM (in case of MDGSMI module) on page **System Options > Network Parameters**.
- Go to installer menu on keypad (installer code + **OK**).
- Go to **INTERNET ACCOUNT** menu and press **OK** to enter the menu. Key in the 9-digit code received via installation e-mail.
- Press **OK**. Once finished, the message REGISTERED will appear; if not, an error message will be displayed. Please see programming manual for details.

3. OPERATING MODE

3.1 ARMING MODE

→ for details please see USER MANUAL

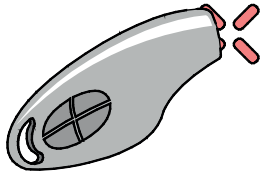
The fastest arming mode allows to arm **sectors proposed** to the user. The proposed sectors are configured during system installation procedure.

3.1.1 System arming from keypad

- Key in the user code, then press **OK** button. The keys of **sectors proposed** for arming to the user in the currently operating area will blink.
- Press **OK** to start arming procedure. If an exit path time has been set, it will be marked by a beep series: leave the premises within the time set walking through the exit path set.
- Once exit time has expired, proposed sectors will be armed.

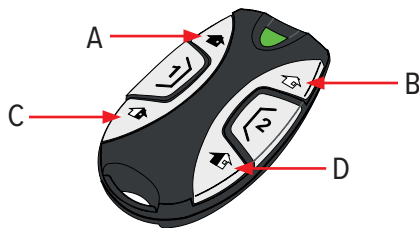
3.1.2 System arming with proximity key

- Move the proximity key close to the detecting area (reader or keypad.)



- The **pre-arming** time will start (around 5s.) During such time it is possible to select sectors to be armed.
- Once the 5s time has expired, the exit time will start (if set). Leave the premises within the time set walking through the exit path set.
- Once exit time has expired, control unit status LED will light up.

3.1.3 System arming with remote control



- A. "Total arming" key
- B. "Total disarming" key
- C. "Partial arming 1" key
- D. "Partial arming 2" key

Press one of arming keys to arm the system:

- "Total arming" (A): arms **all sectors authorized** to the user;
- "Partial arming 1" (C): arms sectors **proposed** to the user;

- "Partial arming 2" (D): arms sectors **authorized but not the proposed** ones.

3.2 SYSTEM DISARMING

→ for details please see USER MANUAL

3.2.1 System disarming from keypad

- When the system is armed, key in the user code, then press **OK** key.
- An acoustic signal will mark the disarming. Only sectors authorized for the specific user will be disarmed.

3.2.2 System disarming with proximity key

- Move the proximity key close to the detecting area (reader or keypad.)
- Wait a few seconds until the unit status LED indicator turns off.

3.2.3 System disarming with remote control

- Press "Total disarming" key (B).

3.3 SYSTEM TEST

System test allows checking operating mode of zones (with *Walk test*), outputs, phone dialler (when active), and battery.

The test will be considered valid only when its four steps (*ZONES TEST*, *OUTPUTS TEST*, *DIALLER TEST*, *BATTERY TEST*) are performed in sequence, one after the other, without exiting from **SYSTEM TEST** menu.

- Disarm the unit.
- Go to the user menu: key in user code then "*" (asterisk) key .
- Use ↓ or ↑ to go to **SYSTEM TEST**. Press **OK** to enter the menu.
- Press **OK** to start the test.

• ZONES TEST:

- Have each zone send an alarm signal, one at a time (if no zone has the *walk test* property, an error message appears). When a zone is successfully tested, the control unit beeps. When no zones have the *walk test* property, the message NOT EXECUTAB. will appear.
- Press **Stop** to exit zones test, ↓ key to go to the following step.

• OUTPUTS TEST:

- Press **OK** to start the test. The test allows the temporary activation of the following outputs: programmable relay, external siren, and the siren connected to the serial line (if present). Press "# " (hash) to suspend the test.

- Press **Stop** to exit outputs test. Press ↓ key to go to the following step.

- **DIALLER TEST:**

- Press **OK**. The dialler will be activated and the message TEST CALL will appear.
- Press **OK** again to start the test. Wait for the test to be completed (if the dialler is not active, the message NOT EXECUT. will appear).
- Press **Stop** to exit the dialler test. Press ↓ key to go to the following step.

- **BATTERY TEST:**

- Press **OK** to start the battery operating test.
- If the test is ok, the message TEST EXECUTED will appear. In case of anomalies, the corresponding events will be generated. At least 2 minutes have to pass between a test and the following one.
- Press **Stop** to exit battery test.

4. EU DECLARATION OF CONFORMITY



The product complies with the current European EMC and LVD directives. The complete text of the EU Declaration of Conformity is available at the following Internet address: www.elmospa.com (simple registration required).

5. WARNINGS

Warnings for the installer

- Comply strictly with current standards governing the installation of electrical systems and security systems, and with the manufacturer's directions given in the manuals supplied with the products.
- Provide the user with full information on using the system installed and on its limitations, pointing out that there are different levels of security performance that will need to suit the user's requirements within the constraints of the specific applicable standards. See that the user looks through the warnings given herein.
- Work involved in the design, installation and maintenance of systems incorporating this product should be performed only by personnel with suitable skills and knowledge required to work safely so as to prevent any accidents. It is vital that systems be installed in accordance with current legislation. The internal parts of certain equipment are connected to the power grid and therefore there is a risk of electrocution when maintenance work is performed inside without first disconnecting the primary and emergency power supplies. Certain products include batteries, rechargeable or otherwise, as an emergency backup power supply. If connected incorrectly, they may cause damage to the product or property, and may endanger the operator (explosion and fire).

Warnings for the user

- Check the system's operation thoroughly at regular intervals, making sure the equipment can be armed and disarmed properly.
- Make sure the system receives proper routine maintenance, employing the services of specialist personnel who meet the requirements prescribed by current regulations.
- Ask your installer to check that the system suits changing operating conditions (e.g. changes in the extent of the areas to be protected, change in access methods, etc...)

General warnings

- This device has been designed, built and tested with the utmost care and attention, adopting test and inspection procedures in accordance with current legislation. Full compliance of the working specifications is only achieved in the event the device is used solely for its intended purpose, namely:

Hybrid multifunctional control units for intrusion detection systems

- The device is not intended for any use other than the above and hence its correct functioning in such cases cannot be assured. Consequently, any use of the manual in your possession for any purpose other than those for which it was compiled - namely for the purpose of explaining the product's technical features and operating procedures - is strictly prohibited.
- Production processes are closely monitored in order to prevent faults and malfunctions. However, the componentry adopted is subject to an extremely modest percentage of faults, which is nonetheless the case with any electronic or mechanical product. Given the intended use of this item (protection of property and people), we invite you to adapt the level of protection offered by the system to suit the actual situation of risk (allowing for the possibility of impaired system operation due to faults or other problems), while reminding you that there are specific standards for the design and production of systems intended for this kind of application.
- **We hereby advise you (the system's operator) to see that the system receives regular routine maintenance, at least in accordance with the provisions of current legislation, and also check on as regular a basis as the risk involved requires that the system in question is operating properly, with particular reference to the control unit, sensors, sounders, dialler(s) and any other device connected. You must let the installer know how well the system seems to be operating, based on the results of periodic checks, without delay.**

- Work involved in the design, installation and maintenance of systems incorporating this product should be performed only by personnel with suitable skills and knowledge required to work safely so as to prevent any accidents. It is vital that systems be installed in accordance with current legislation. The internal parts of certain equipment are connected to the power grid and therefore there is a risk of electrocution when maintenance work is performed inside without first disconnecting the primary and emergency power supplies. Certain products include batteries, rechargeable or otherwise, as an emergency backup power supply. If connected incorrectly, they may cause damage to the product or property, and may endanger the operator (explosion and fire).

Fundamental safety rules

- The use of the device is forbidden for children and unassisted disabled individuals.
- Do not touch the device when bare footed, or with wet body parts. Do not directly spray or throw water on the device.
- Do not pull, remove or twist the electric cables protruding from the devices even if the same is disconnected from the power source.

Disposal warnings



IT08020000001624

In accordance with Directive 2012/19/EU on waste electrical and electronic equipment (WEEE), please be advised that the EEE was placed on the market after 13 August 2005 and must be disposed of separately from normal household waste.

For correct operation, this product requires the use of a battery. Should such battery need replacing, the old one must be taken to an authorised waste disposal site. The materials used for this product are highly toxic and polluting if dispersed into the environment.