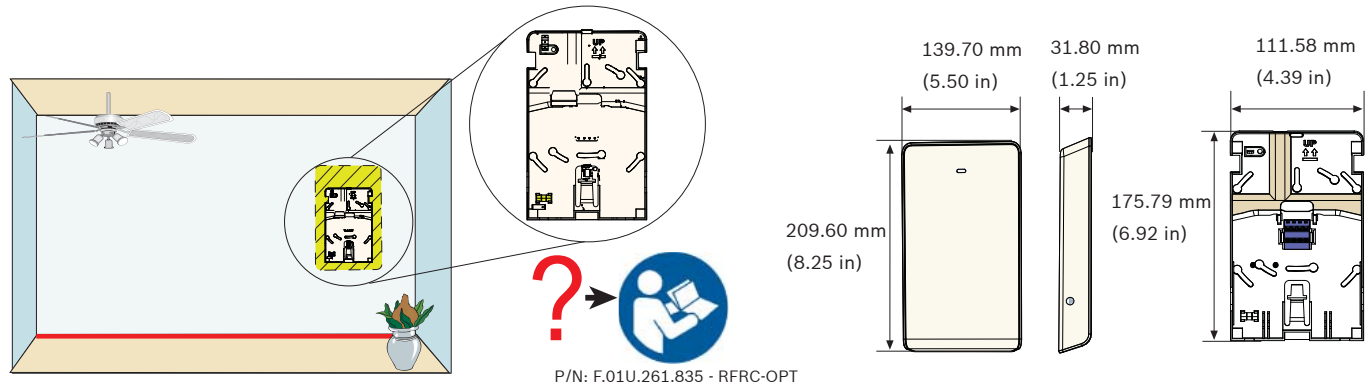


**RADION receiver OP**  
RFRC-OPT



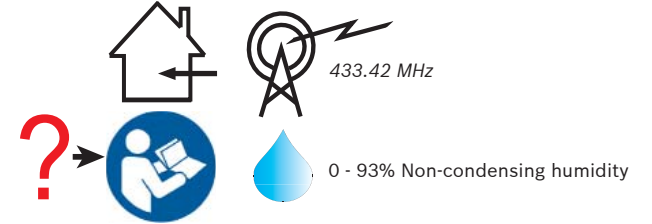
Installation Guide



P/N: F.01U.261.835 - RFRC-OPT



EN  
EN 50131-3  
EN 50131-5-3  
Grade 2  
Environment Class II

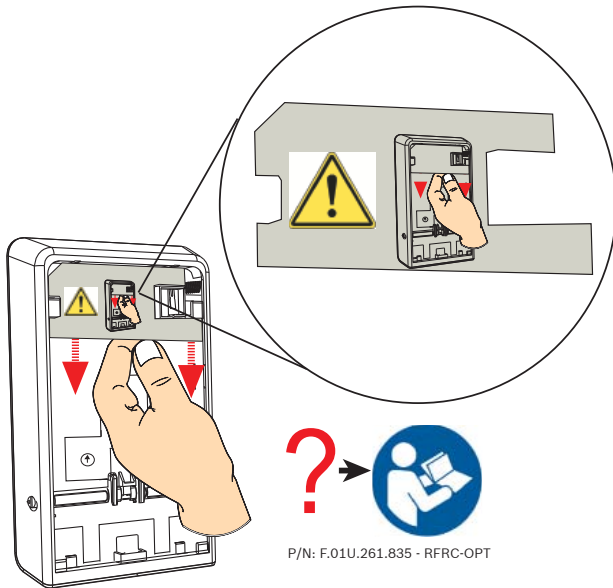


P/N: F.01U.261.835 - RFRC-OPT



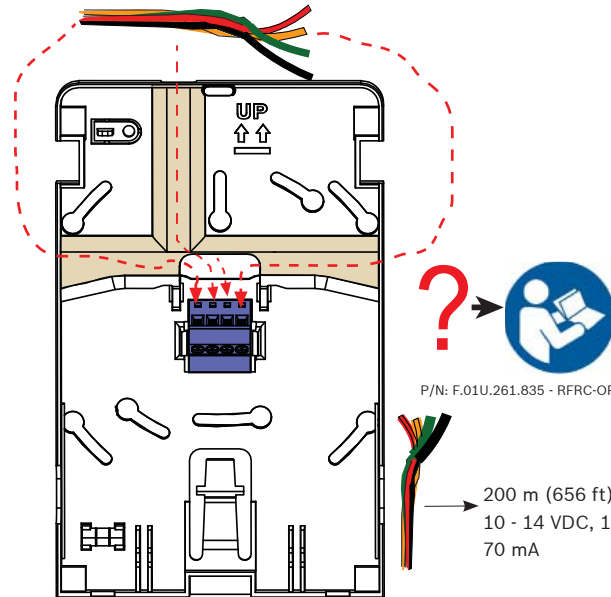
Functional range: -10°C to +49°C (+14°F to +120°F)  
UL only: 0°C to +49°C (+32°F to +120°F)  
EN 50130-5 Class II only: -10°C to +40°C (+14°F to +104°F)

1



P/N: F.01U.261.835 - RFRC-OPT

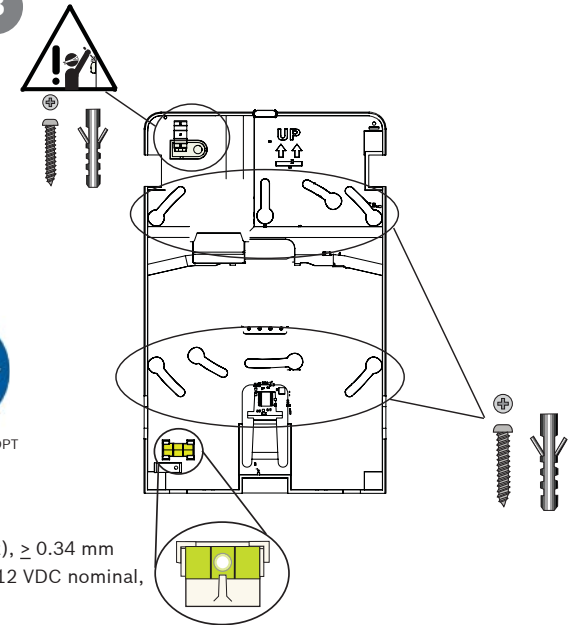
2

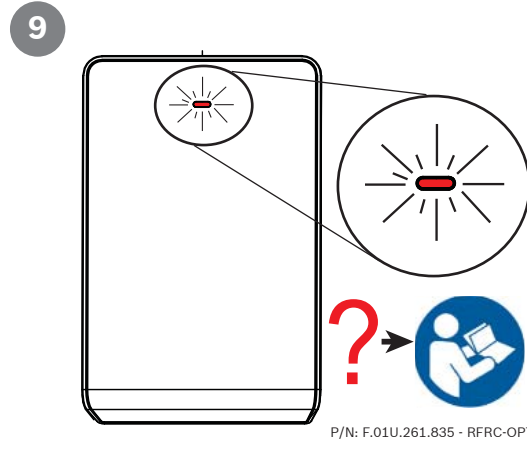
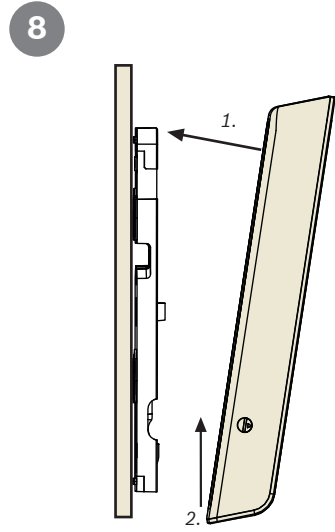
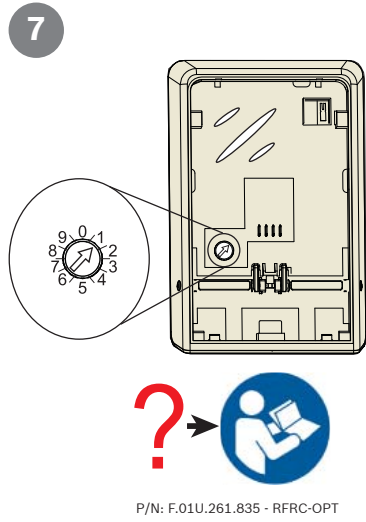
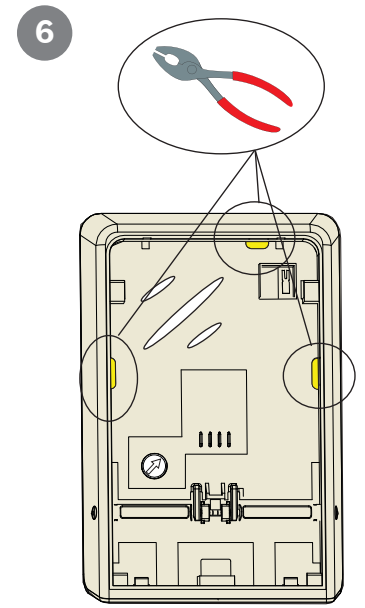
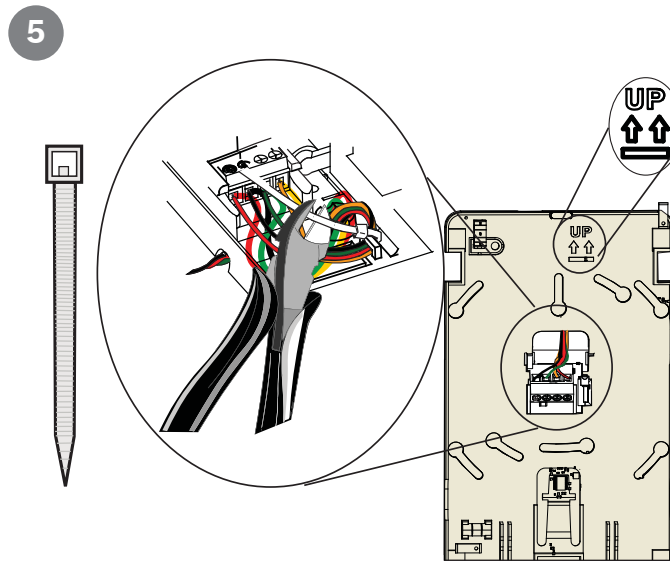
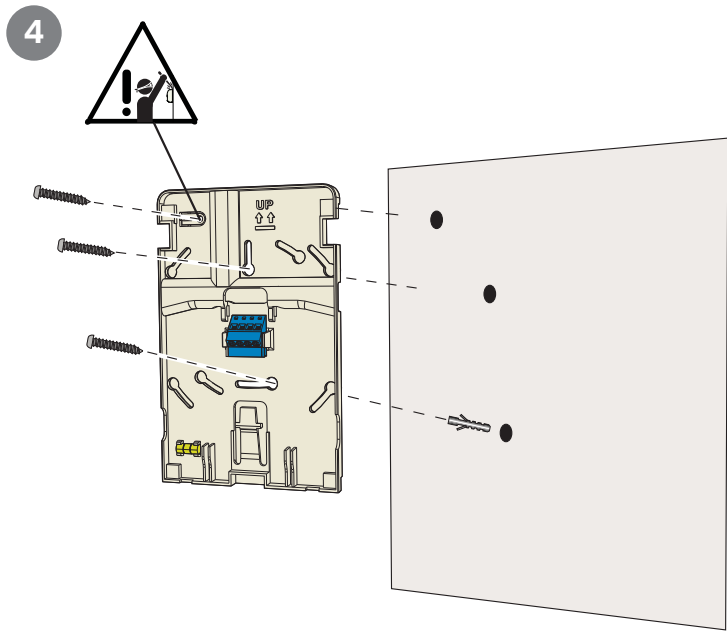


P/N: F.01U.261.835 - RFRC-OPT

200 m (656 ft),  $\geq 0.34$  mm  
10 - 14 VDC, 12 VDC nominal,  
70 mA

3





**Copyright**  
 This document is the intellectual property of Bosch Security Systems, Inc. and is protected by copyright. All rights reserved.

**Trademarks**  
 All hardware and software product names used in this document are likely to be registered trademarks and must be treated accordingly.

**Determine Bosch Security Systems, Inc. Product Manufacturing Dates**  
 Use the serial number located on the product label and refer to the Bosch Security Systems, Inc web site at:  
<http://www.boschsecurity.com/datecodes/>.

